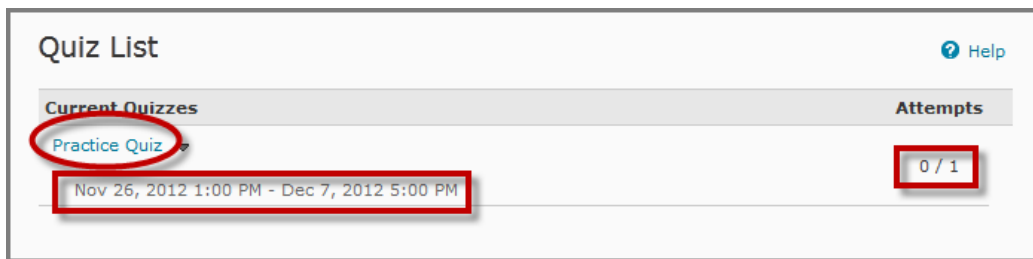


Taking Quizzes in Desire2Learn

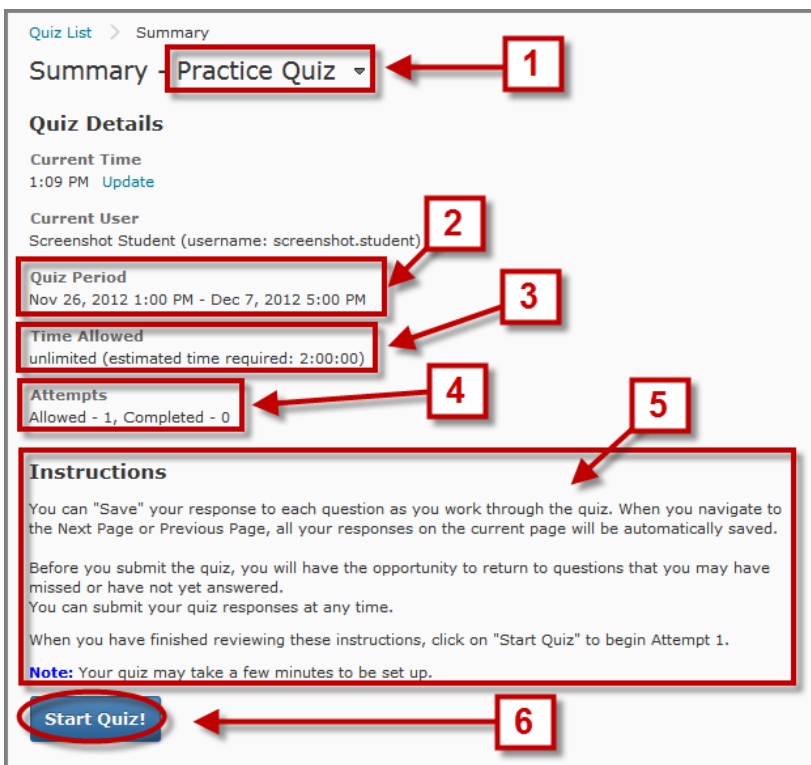
Log into D2L and open one of your courses. Access your list of **Quizzes** by clicking on the respective icon in the Course Navigation Bar.



In the list of Quizzes, take a quiz by clicking on its **Name**. Take note of important information associated with the quiz on this screen. This is where you can see the date the quiz is available to be completed as well as the number of attempts.



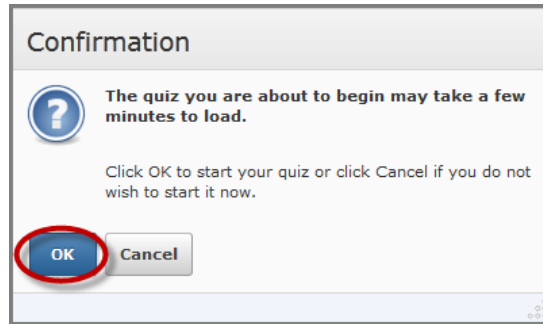
Upon clicking the name of your quiz, you will be taken to the **Summary Page** which confirms that you wish to start the quiz and provides more details. Take a moment to read through this page to review this information.



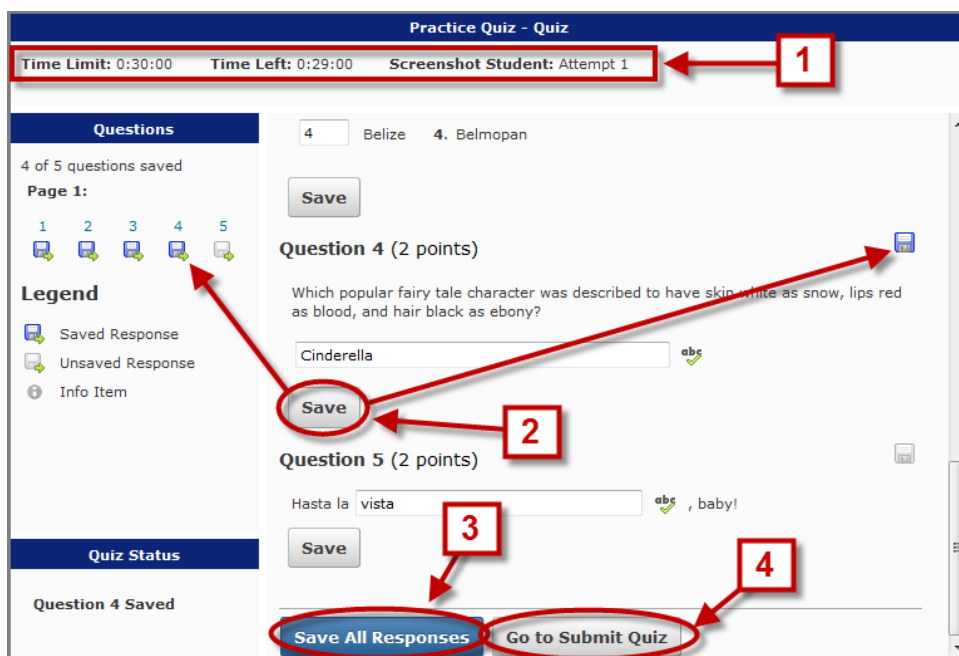
1. Confirm you have selected the correct quiz by checking the name.
2. Be aware of the **Quiz Period**, the dates when your quiz is available. Plan for time to take additional attempts when allowed.
3. Know how much time you have to complete your quiz and plan accordingly to avoid interruption.
4. Check the number of attempts allowed.
5. Read the instructions carefully for each quiz.
6. When you are ready to begin press **Start Quiz!**

NOTE: Some quizzes may only allow only one attempt, so be sure you are ready to get started before pressing **Start Quiz!**

After clicking **Start Quiz!**, you will be asked to confirm that you are ready to begin. Press **OK** only if you are sure you are ready.



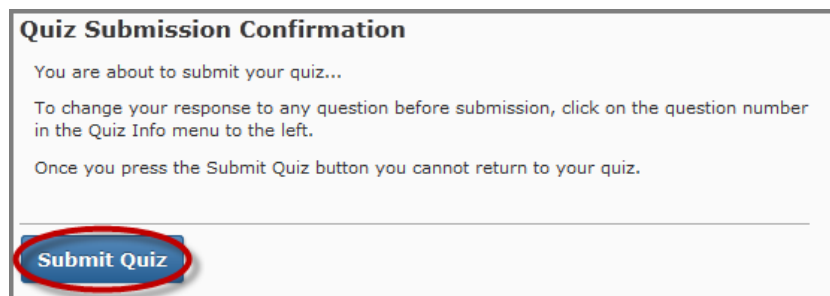
Once your quiz loads, read each question carefully and use the various onscreen tools and information to guide you:



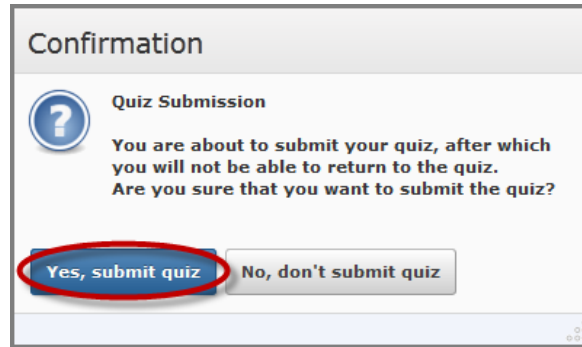
1. Keep an eye on the amount of **Time Left** and other helpful details at the top of the page.
2. Press the **Save** button below each question, the Saved Response icons will be colored in if saved successfully.
3. **Save All Responses** after completing each page. Some quizzes may only be one page long.
4. After saving your responses and double checking that each question has an answer, press **Go to Submit Quiz**.

NOTE: If you experience any technical difficulties when taking a quiz or if you think it was not submitted properly, contact the **24/7 Help Desk** immediately at 888-800-9198 and notify your instructor of the issue.

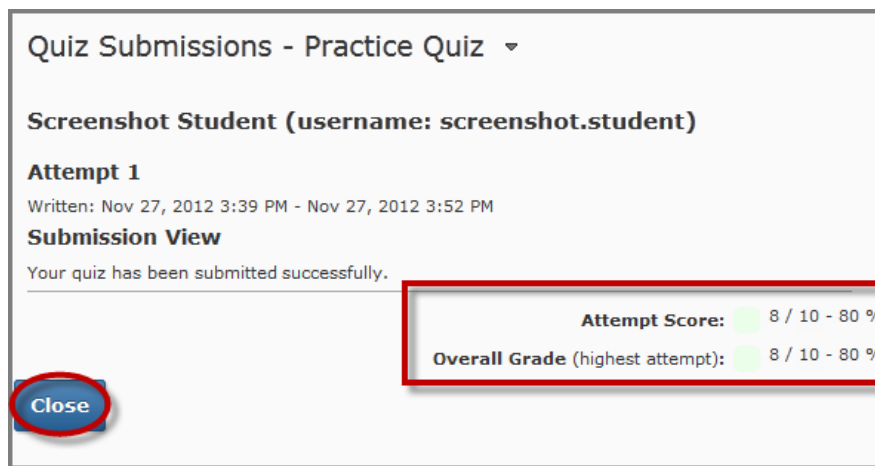
After pressing Go to Submit Quiz, you will see a confirmation screen and may still return to questions if you need to make changes. Once you are ready, press **Submit Quiz**.



A final confirmation window will appear, press **Yes, submit quiz**.



You will be taken to a Quiz Submission summary that provides information about your attempt. Here you can see your **Attempt Score** and **Overall Grade** for the quiz out of all attempts



NOTE: Some Quiz Submission views may allow you to see your responses and the correct answers after the Quiz Period has closed. Access to this information will vary by quiz and is ultimately determined by your instructor, so do not expect all quiz submission views to show the same level of detail.

[Click here to learn how to return to the basic Quiz Submission like the one shown above, or to see more detail when it is available.](#)